

2004 LIDAR topography (Puget Sound LIDAR Consortium).
 10 m USGS Hillshade
 2006 and 2009 aerials from ESRI World Imagery
 WA State Dept of Nat. Resources 1:100,000 Geology
 River miles calculated from NHD stream alignment (USGS)
 Roads from TIGER (US Census Bureau)
 Coordinate System: State Plane Washington North

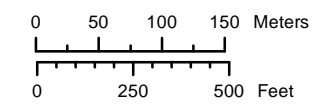
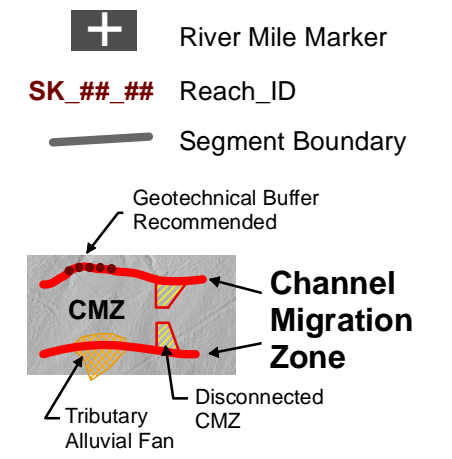
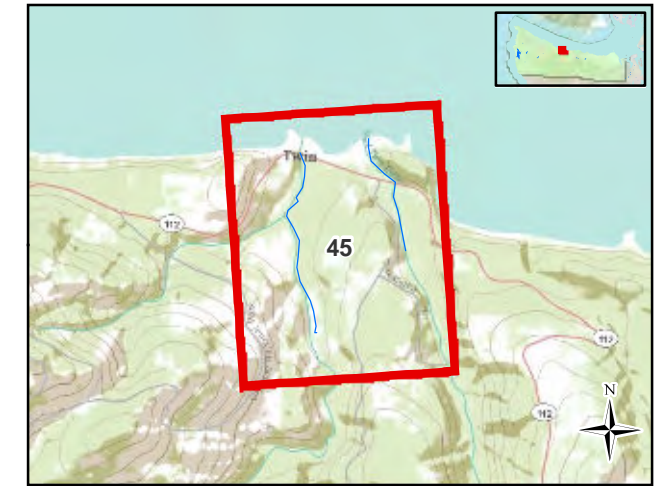
Analyzed by: Andrew Nelson (GeoEngineers)
 Reviewed by: Mary Ann Reinhart, LG, LEG (GeoEngineers)



Channel Migration Assessment

*Prepared for the Shoreline Master Program Update
 Clallam County, Washington*

E. & W. Twin Rivers Map 45



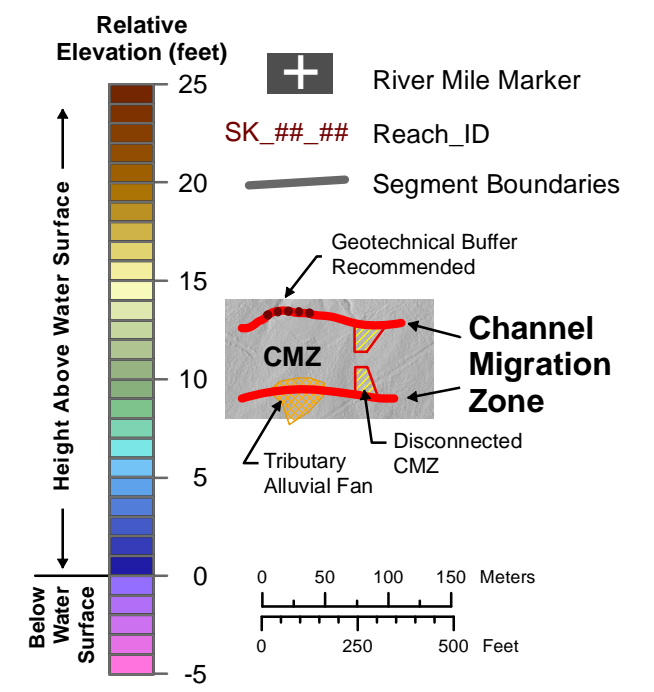
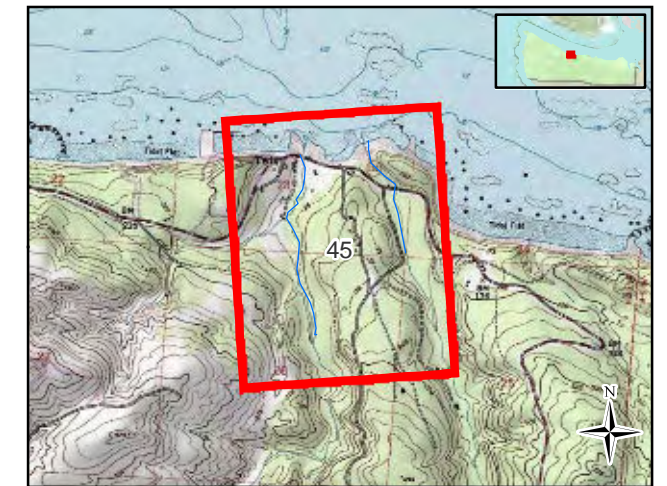
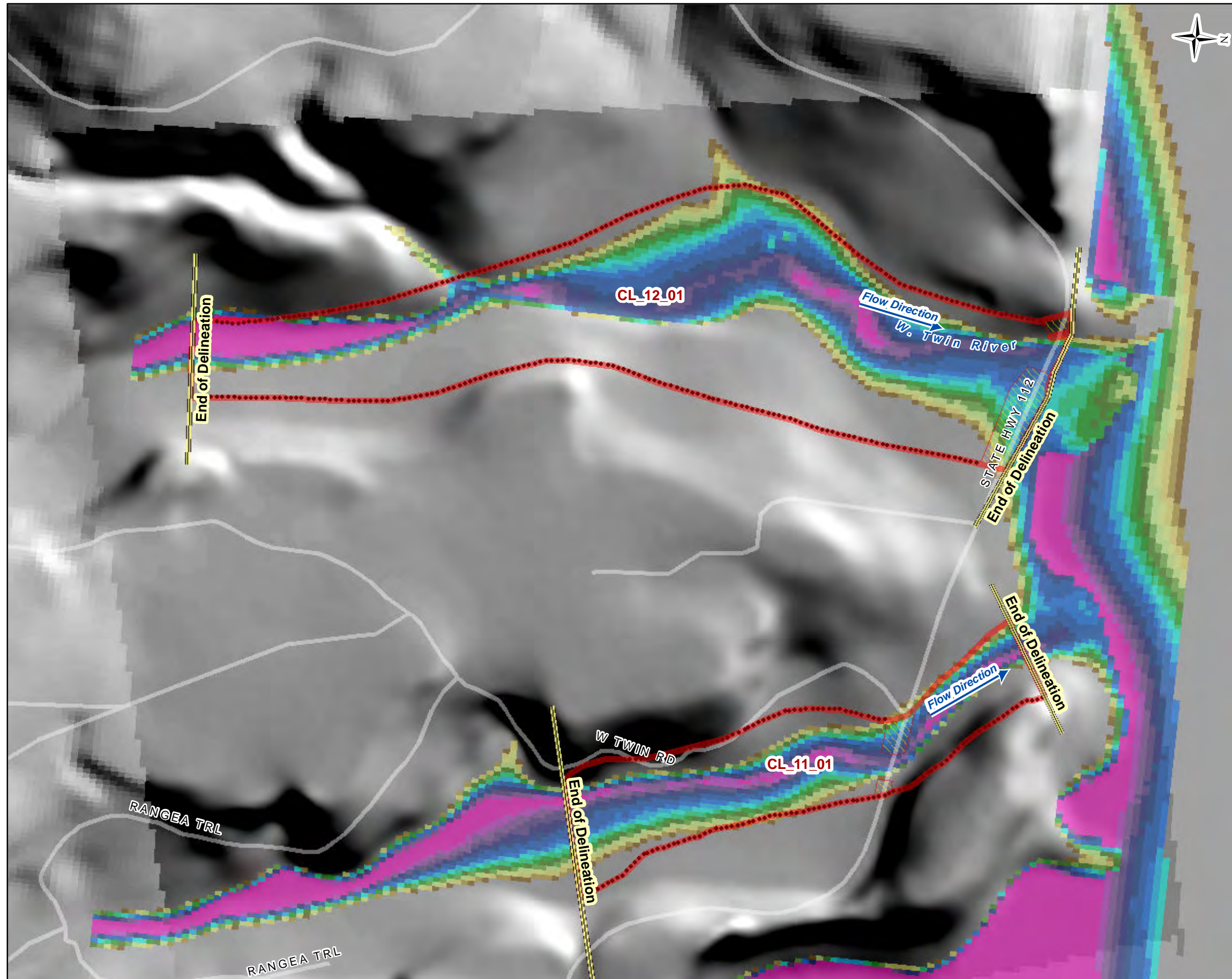
2004 LIDAR topography (Puget Sound LIDAR Consortium).
 10 m USGS Hillshade
 2006 and 2009 aerials from ESRI World Imagery
 WA State Dept of Nat. Resources 1:100,000 Geology
 River miles calculated from NHD stream alignment (USGS)
 Roads from TIGER (US Census Bureau)
 Coordinate System: State Plane Washington North

Analyzed by: Andrew Nelson (GeoEngineers)
 Reviewed by: Mary Ann Reinhart, LG, LEG (GeoEngineers)



Channel Migration Assessment
*Prepared for the Shoreline Master Program Update
 Clallam County, Washington*

E. & W. Twin Rivers Map 45



2004 LIDAR topography (Puget Sound LIDAR Consortium).
 1:24,000 USGS DRG
 River miles calculated from NHD stream alignment (USGS)
 Relative elevation surface from WA Department of Ecology
 Roads from TIGER (US Census Bureau)

Analyzed by: Andrew Nelson (GeoEngineers)
 Reviewed by: Mary Ann Reinhart, LG, LEG (GeoEngineers)



Channel Migration Assessment
*Prepared for the Shoreline Master Program Update
 Clallam County, Washington*

E. & W. Twin Rivers Map 45